

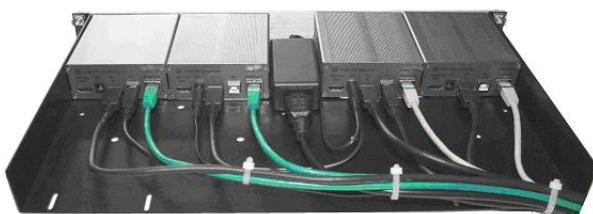
## Accessories for KVM Extender Series 3922x

The following accessories for the KVM Extender Series 3922x are available upon demand.

### 1. 19" rack mount shelf with front bezel for up to 4 units



front view

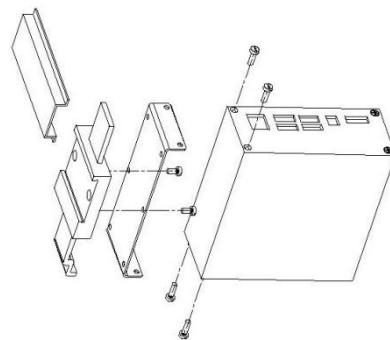


back view, example

### 2. 19" rack mount shelf with front bezel and desktop power supply for up to 4 units

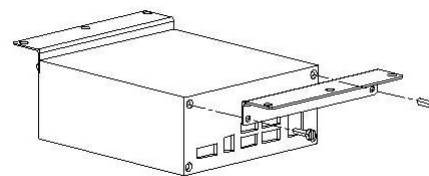
### 3. 19" rack mount shelf with front bezel and redundant power supply for up to 4 units – W/O picture

### 4. DIN rail bracket



This brackets fit on right or left side of a unit

### 5. Shelf or wall mount brackets



This brackets fit on top or bottom of the extenders - includes two brackets for one unit and screws.

### Upgrade options

Upgrade options are installed via Firmware upgrade. Each unit has an individual S/N and the upgrade firmware can exclusively be used for the individual unit. Upgrades can be ordered via LINDY No. 09220 and 09219 providing the individual unit no. from OSD.

For 39221: USB 2.0 mass storage support to create 39222 from 39221 unit.

For 39223 and 39224 – any combination of the options:

1. USB 2.0 mass storage support
2. Sound option (Mic and stereo speakers)
3. VGA input option for TX

For 39224:

1. Single Mode Fiber Optic SFP Duplex LC up to 20km
2. Single Mode Fiber Optic SFP Simplex LC up to 20km